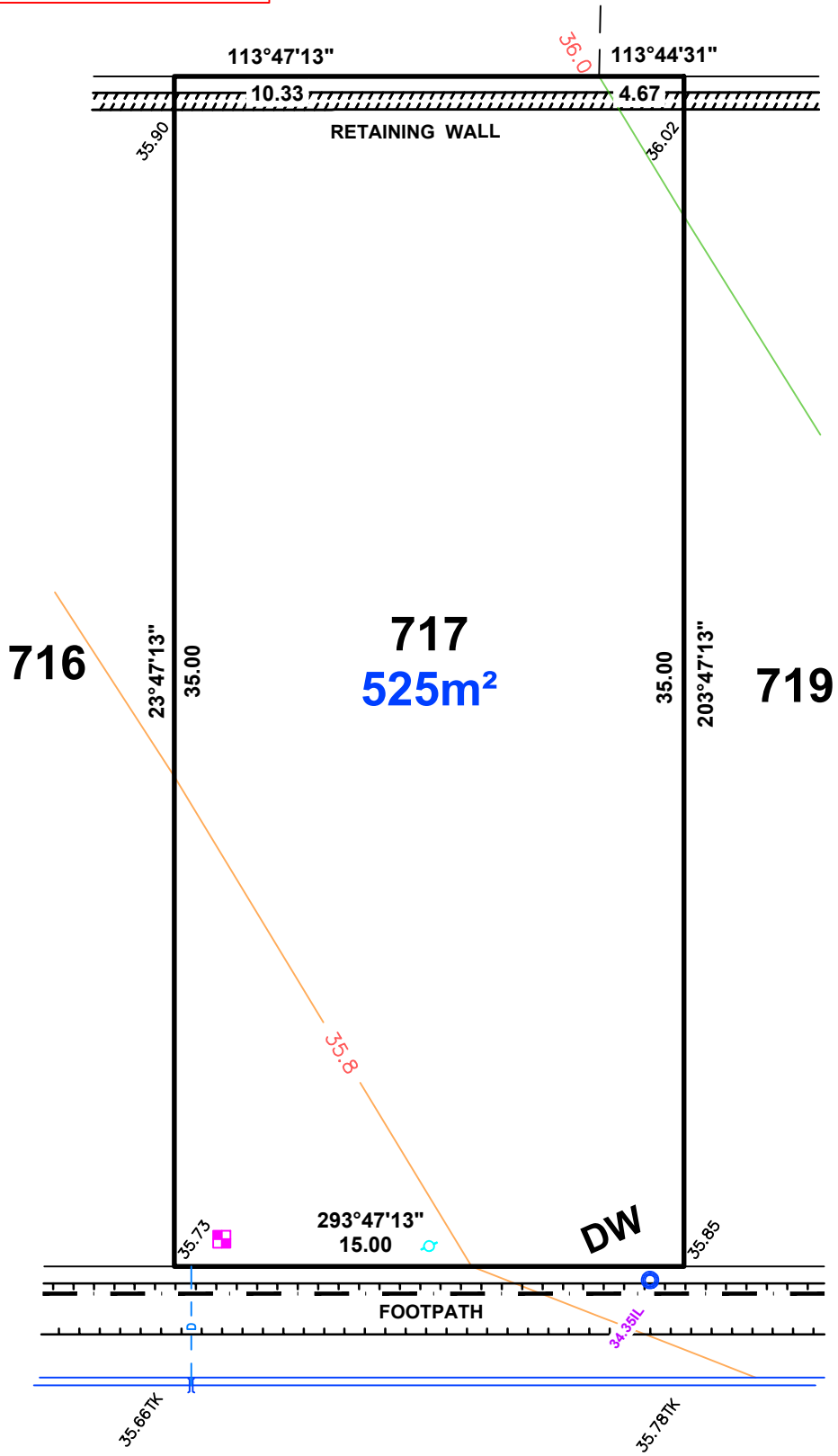


**IMPORTANT**  
 SERVICE AND DRIVEWAY LOCATIONS  
 ARE APPROXIMATE. ANY CHANGES WILL  
 BE AT THE PURCHASERS EXPENSE.  
 PURCHASER: \_\_\_\_\_  
 PURCHASER: \_\_\_\_\_  
 DATE: \_\_\_\_\_



**LEGEND**

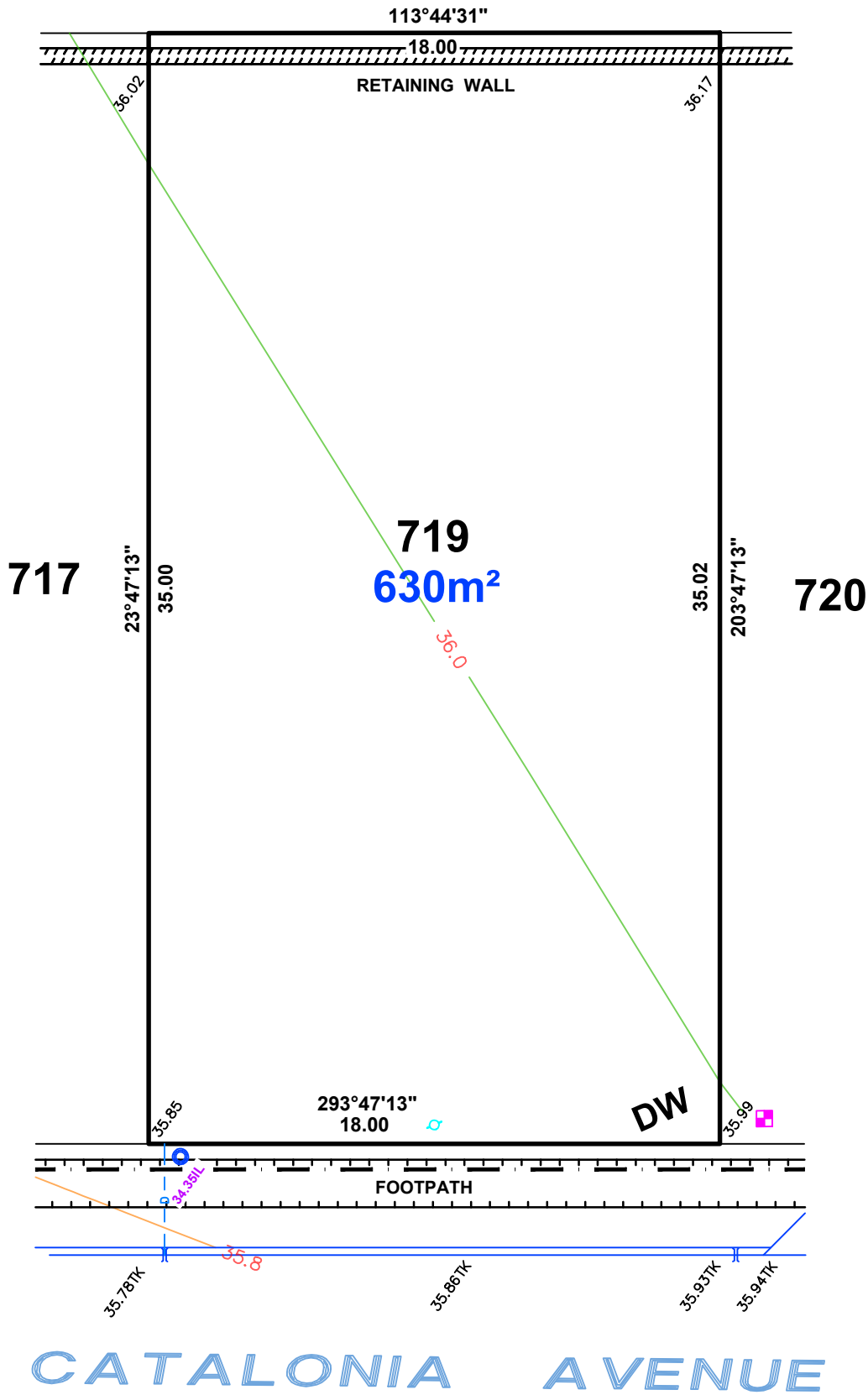
- TAP
- SEWER IP
- STOBIE POLE
- TELSTRA PIT
- S/W GRATING
- SEWER MAN HOLE
- S/W MANHOLE
- LIGHT POLE
- ETSA CONNECTION
- BOLLARD
- SIGN
- S/W CONNECTION
- FOOTPATH
- SIDE ENTRY PIT
- COMMON SERVICE TRENCH
- DOMESTIC
- SEWER IO
- DW PROPOSED DOUBLE DRIVEWAY

**CATALONIA AVENUE**



1:200

**IMPORTANT**  
 SERVICE AND DRIVEWAY LOCATIONS  
 ARE APPROXIMATE. ANY CHANGES WILL  
 BE AT THE PURCHASERS EXPENSE.  
 PURCHASER: \_\_\_\_\_  
 PURCHASER: \_\_\_\_\_  
 DATE: \_\_\_\_\_



**LEGEND**

- TAP
- SEWER IP
- STOBIE POLE
- TELSTRA PIT
- S/W GRATING
- SEWER MAN HOLE
- S/W MANHOLE
- LIGHT POLE
- ETSA CONNECTION
- BOLLARD
- SIGN
- S/W CONNECTION
- FOOTPATH
- SIDE ENTRY PIT
- COMMON SERVICE TRENCH
- DOMESTIC
- SEWER IO
- DW** PROPOSED DOUBLE DRIVEWAY



1:200

ALLOTMENT 720 in DEV. NO.292/D066/2012

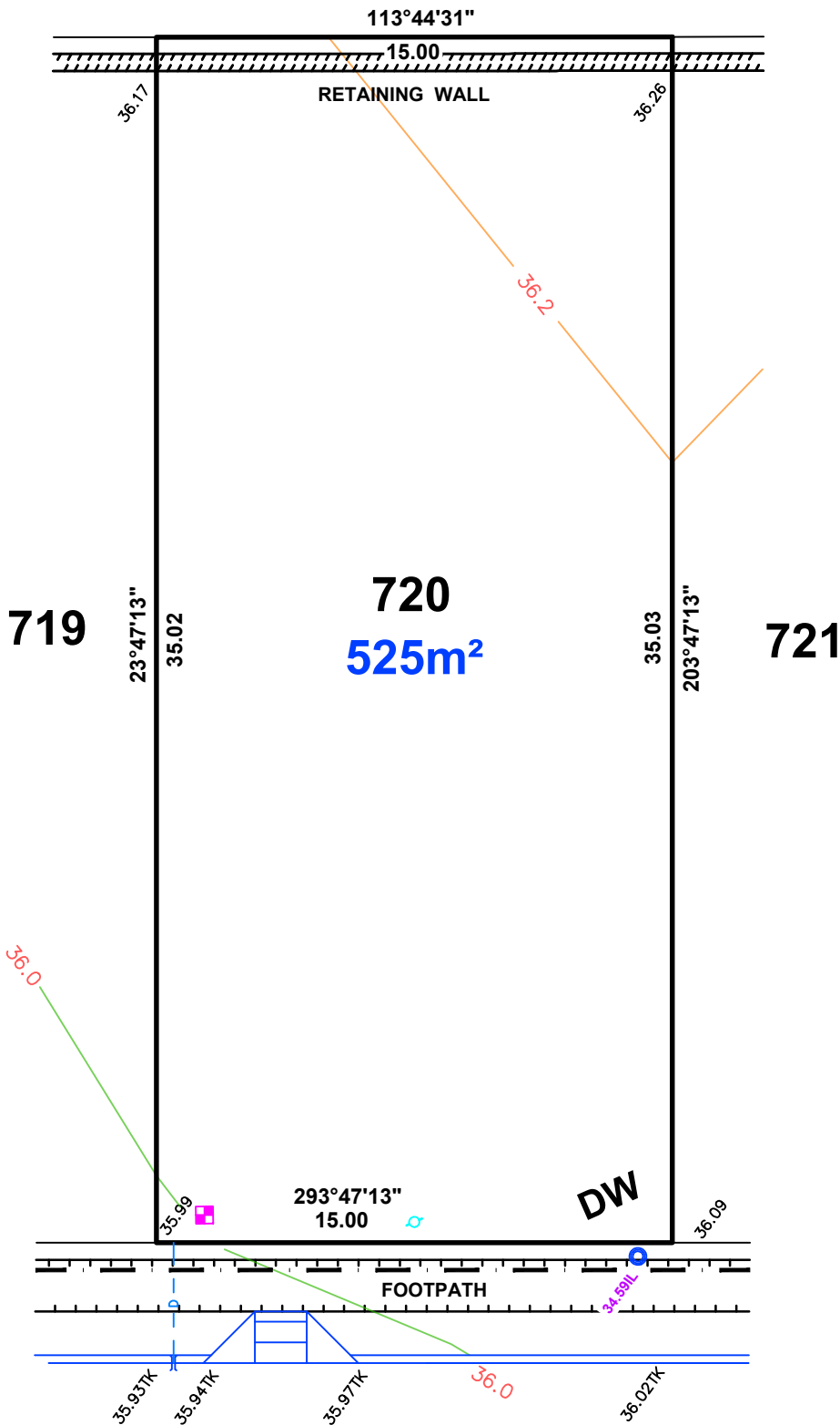
in the area named

MUNNO PARA WEST

CT ---/----

PRELIMINARY

**IMPORTANT**  
 SERVICE AND DRIVEWAY LOCATIONS  
 ARE APPROXIMATE. ANY CHANGES WILL  
 BE AT THE PURCHASERS EXPENSE.  
 PURCHASER: \_\_\_\_\_  
 PURCHASER: \_\_\_\_\_  
 DATE: \_\_\_\_\_



**LEGEND**

- TAP
- SEWER IP
- STOBIE POLE
- TELSTRA PIT
- S/W GRATING
- SEWER MAN HOLE
- S/W MANHOLE
- LIGHT POLE
- ETSA CONNECTION
- BOLLARD
- SIGN
- S/W CONNECTION
- FOOTPATH
- SIDE ENTRY PIT
- COMMON SERVICE TRENCH
- DOMESTIC
- SEWER IO
- PROPOSED DOUBLE DRIVEWAY

CATALONIA AVENUE



1:200

ALLOTMENT 721 in DEV. NO.292/D066/2012

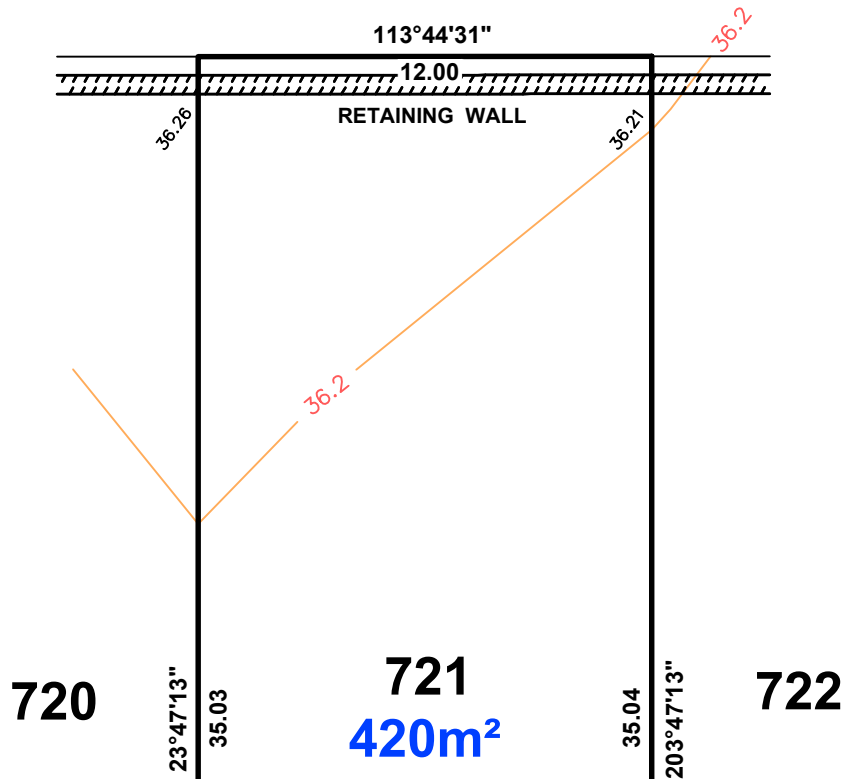
in the area named

MUNNO PARA WEST

CT ---/----

PRELIMINARY

IMPORTANT  
 SERVICE AND DRIVEWAY LOCATIONS  
 ARE APPROXIMATE. ANY CHANGES WILL  
 BE AT THE PURCHASERS EXPENSE.  
 PURCHASER: \_\_\_\_\_  
 PURCHASER: \_\_\_\_\_  
 DATE: \_\_\_\_\_



LEGEND

- TAP
- SEWER IP
- STOBIE POLE
- TELSTRA PIT
- S/W GRATING
- SEWER MAN HOLE
- S/W MANHOLE
- LIGHT POLE
- ETSA CONNECTION
- BOLLARD
- SIGN
- S/W CONNECTION
- FOOTPATH
- SIDE ENTRY PIT
- COMMON SERVICE TRENCH
- DOMESTIC
- SEWER IO
- DW PROPOSED DOUBLE DRIVEWAY

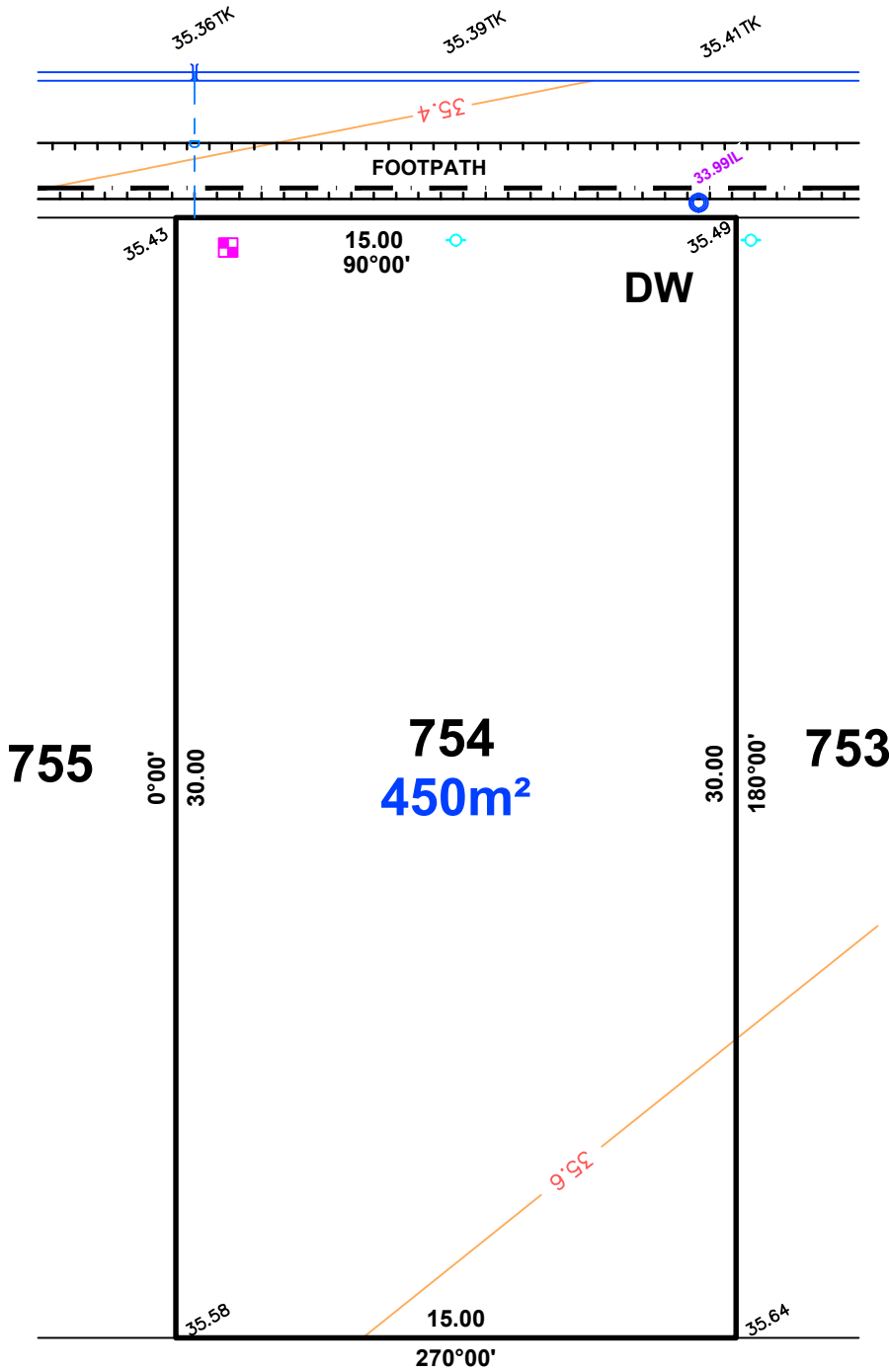
CATALONIA AVENUE



1:200

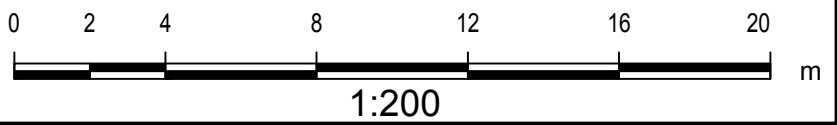
**IMPORTANT**  
 SERVICE AND DRIVEWAY LOCATIONS  
 ARE APPROXIMATE. ANY CHANGES WILL  
 BE AT THE PURCHASERS EXPENSE.  
 PURCHASER: \_\_\_\_\_  
 PURCHASER: \_\_\_\_\_  
 DATE: \_\_\_\_\_

**MURCIA AVENUE**



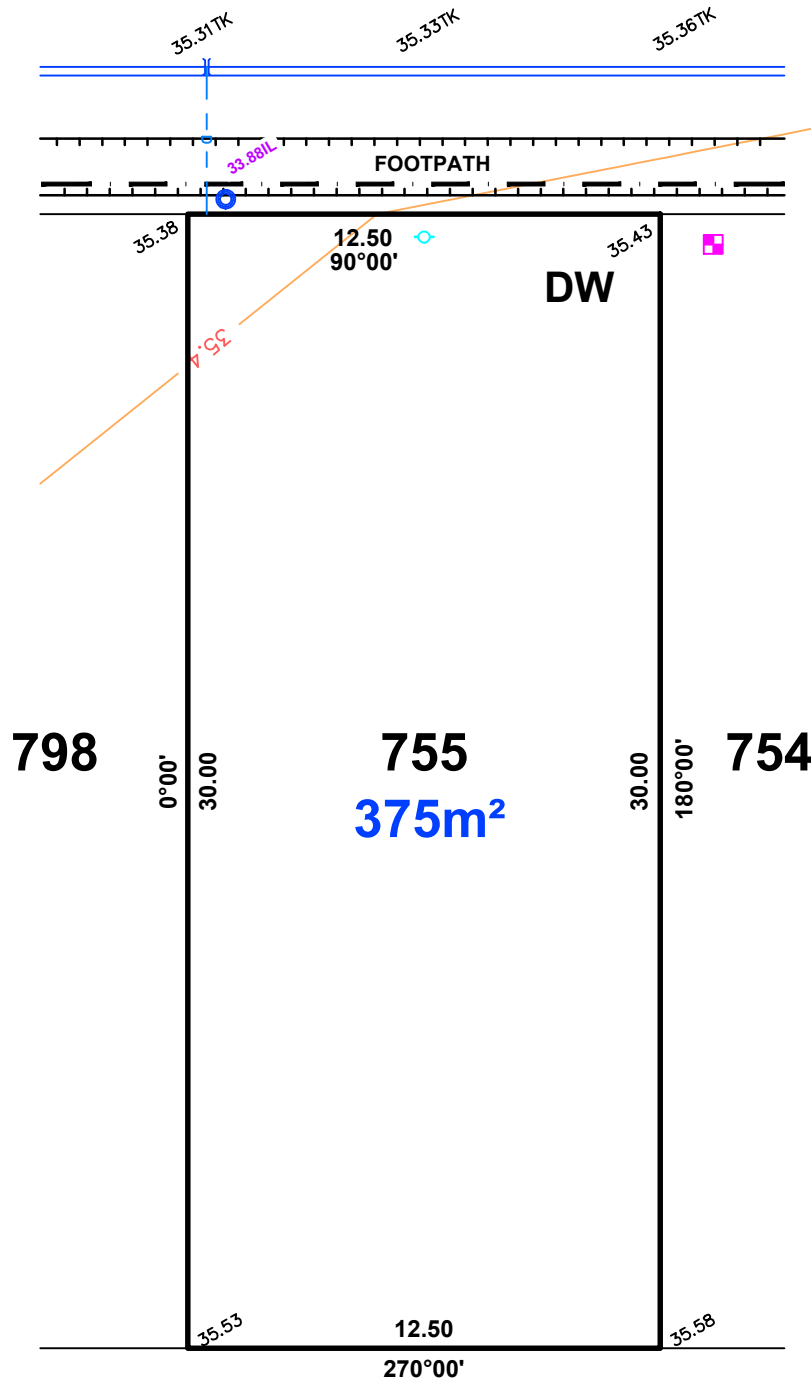
**LEGEND**

- WATER METER
- SIP SEWER IP
- STOBIE POLE
- TELSTRA PIT
- S/W GRATING
- SEWER MAN HOLE
- S/W MANHOLE
- LIGHT POLE
- ETSA CONNECTION
- BOLLARD
- SIGN
- S/W CONNECTION
- FOOTPATH
- SIDE ENTRY PIT
- COMMON SERVICE TRENCH
- DOMESTIC
- SEWER IO
- DW PROPOSED DOUBLE DRIVEWAY



**IMPORTANT**  
 SERVICE AND DRIVEWAY LOCATIONS  
 ARE APPROXIMATE. ANY CHANGES WILL  
 BE AT THE PURCHASERS EXPENSE.  
 PURCHASER: \_\_\_\_\_  
 PURCHASER: \_\_\_\_\_  
 DATE: \_\_\_\_\_

**MURCIA AVENUE**



**LEGEND**

- WATER METER
- SIP SEWER IP
- STOBIE POLE
- TELSTRA PIT
- S/W GRATING
- SEWER MAN HOLE
- S/W MANHOLE
- LIGHT POLE
- ETSA CONNECTION
- BOLLARD
- SIGN
- S/W CONNECTION
- FOOTPATH
- SIDE ENTRY PIT
- COMMON SERVICE TRENCH
- DOMESTIC
- SEWER IO
- PROPOSED DOUBLE DRIVEWAY



1:200

ALLOTMENT 798 in DEV. NO.292/D066/2012

in the area named

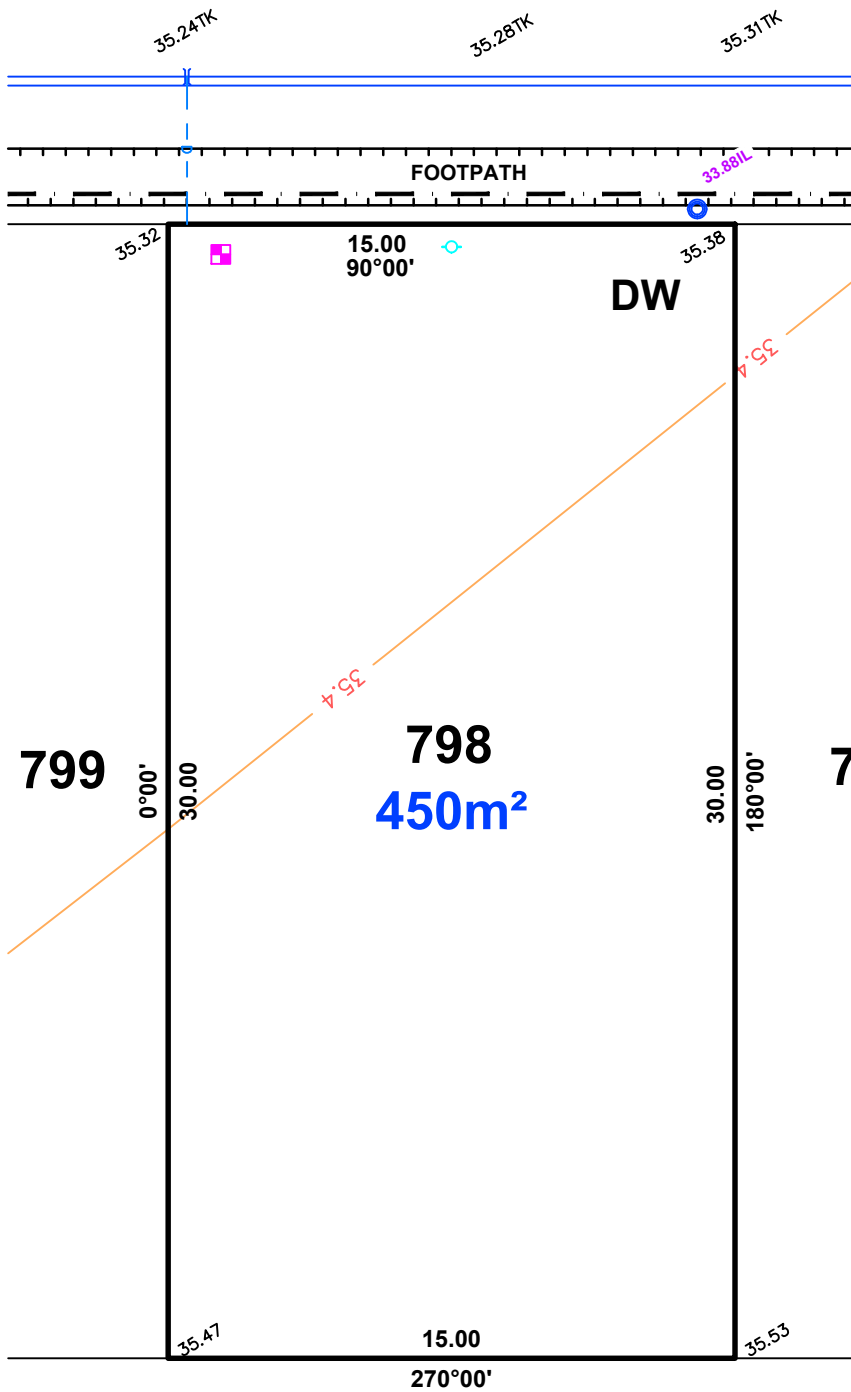
MUNNO PARA WEST

CT ---/----

PRELIMINARY

IMPORTANT  
 SERVICE AND DRIVEWAY LOCATIONS  
 ARE APPROXIMATE. ANY CHANGES WILL  
 BE AT THE PURCHASERS EXPENSE.  
 PURCHASER: \_\_\_\_\_  
 PURCHASER: \_\_\_\_\_  
 DATE: \_\_\_\_\_

# MURCIA AVENUE



## LEGEND

- WATER METER
- SIP SEWER IP
- STOBIE POLE
- TELSTRA PIT
- S/W GRATING
- SEWER MAN HOLE
- S/W MANHOLE
- LIGHT POLE
- E.T.S.A. CONNECTION
- BOLLARD
- SIGN
- S/W CONNECTION
- FOOTPATH
- SIDE ENTRY PIT
- COMMON SERVICE TRENCH
- DOMESTIC
- SEWER IO
- PROPOSED DOUBLE DRIVEWAY



1:200

ALLOTMENT 907 in DEV. NO.292/D066/2012  
 in the area named  
 MUNNO PARA WEST  
 CT ---/----

**PRELIMINARY**

**908**

90°00'

34.00

**905**

35.91

35.77

**907**

**539m<sup>2</sup>**

16.00

35.6

**906**

270°00'

31.00

225°00'

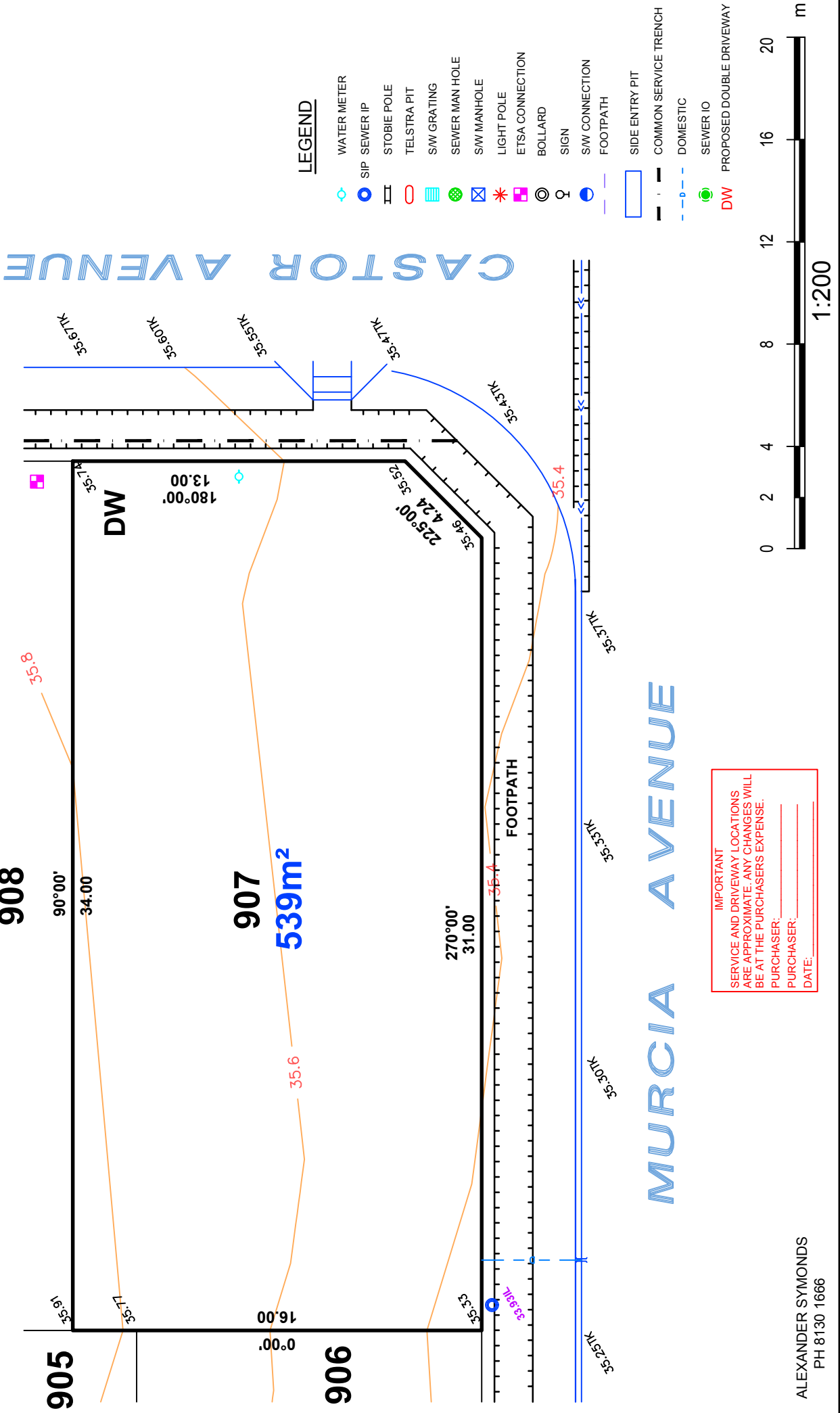
4.24

35.52

13.00

**CASTOR AVENUE**

**MURCIA AVENUE**



**LEGEND**

- WATER METER
- SIP
- SEWER IP
- STOBIE POLE
- TELSTRA PIT
- S/W GRATING
- SEWER MAN HOLE
- S/W MANHOLE
- LIGHT POLE
- ETSA CONNECTION
- BOLLARD
- SIGN
- S/W CONNECTION
- FOOTPATH
- SIDE ENTRY PIT
- COMMON SERVICE TRENCH
- DOMESTIC
- SEWER IO
- DW PROPOSED DOUBLE DRIVEWAY

**IMPORTANT**  
 SERVICE AND DRIVEWAY LOCATIONS  
 ARE APPROXIMATE. ANY CHANGES WILL  
 BE AT THE PURCHASERS EXPENSE.  
 PURCHASER: \_\_\_\_\_  
 DATE: \_\_\_\_\_

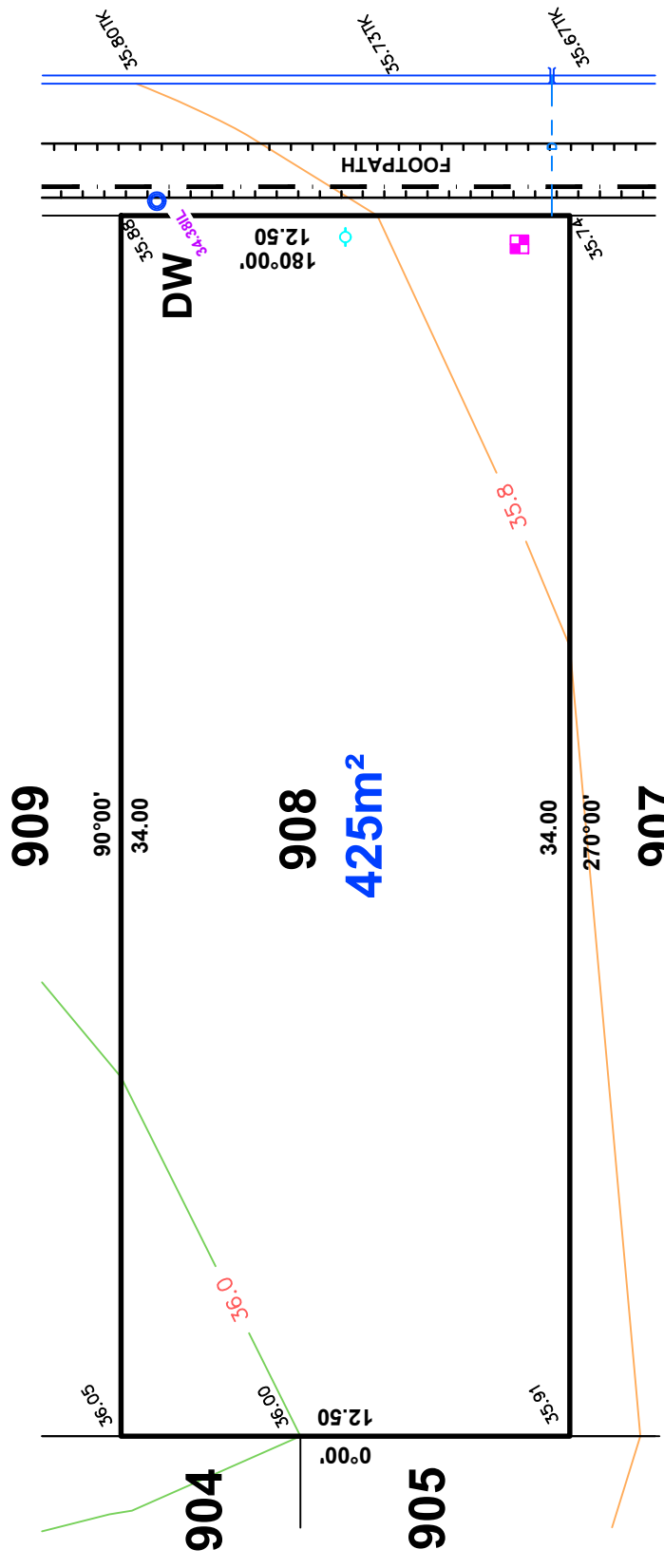
ALEXANDER SYMONDS  
 PH 8130 1666



ALLOTMENT 908 in DEV. NO.292/D066/2012  
 in the area named  
 MUNNO PARA WEST  
 CT ---/----

**PRELIMINARY**

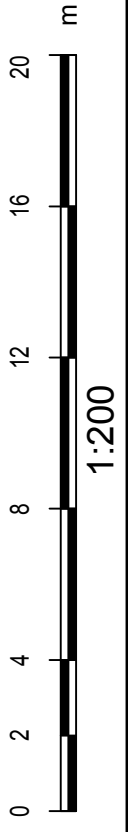
CASTOR AVENUE



**LEGEND**

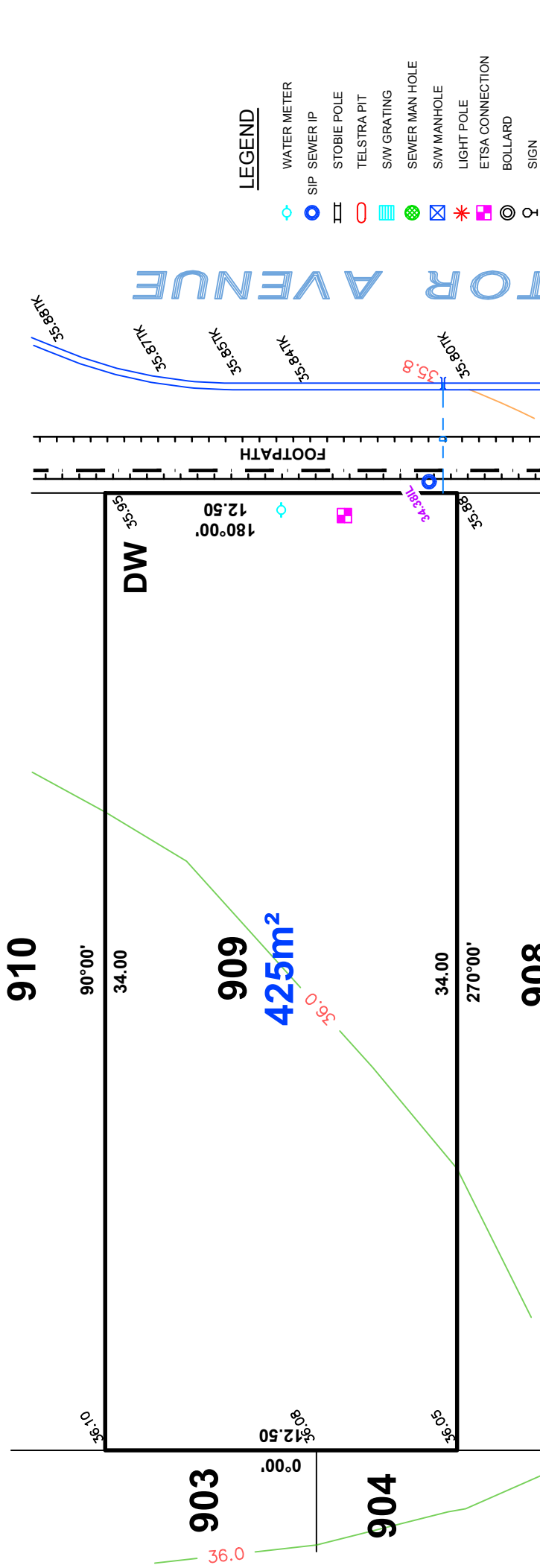
- WATER METER
- SIP SEWER IP
- STOBIE POLE
- TELSTRA PIT
- S/W GRATING
- SEWER MAN HOLE
- S/W MANHOLE
- LIGHT POLE
- ETSA CONNECTION
- BOLLARD
- SIGN
- S/W CONNECTION
- FOOTPATH
- SIDE ENTRY PIT
- COMMON SERVICE TRENCH
- DOMESTIC
- SEWER IO
- DW PROPOSED DOUBLE DRIVEWAY

**IMPORTANT**  
 SERVICE AND DRIVEWAY LOCATIONS  
 ARE APPROXIMATE. ANY CHANGES WILL  
 BE AT THE PURCHASERS EXPENSE.  
 PURCHASER: \_\_\_\_\_  
 DATE: \_\_\_\_\_



ALLOTMENT 909 in DEV. NO.292/D066/2012  
 in the area named  
 MUNNO PARA WEST  
 CT ---/----

**PRELIMINARY**

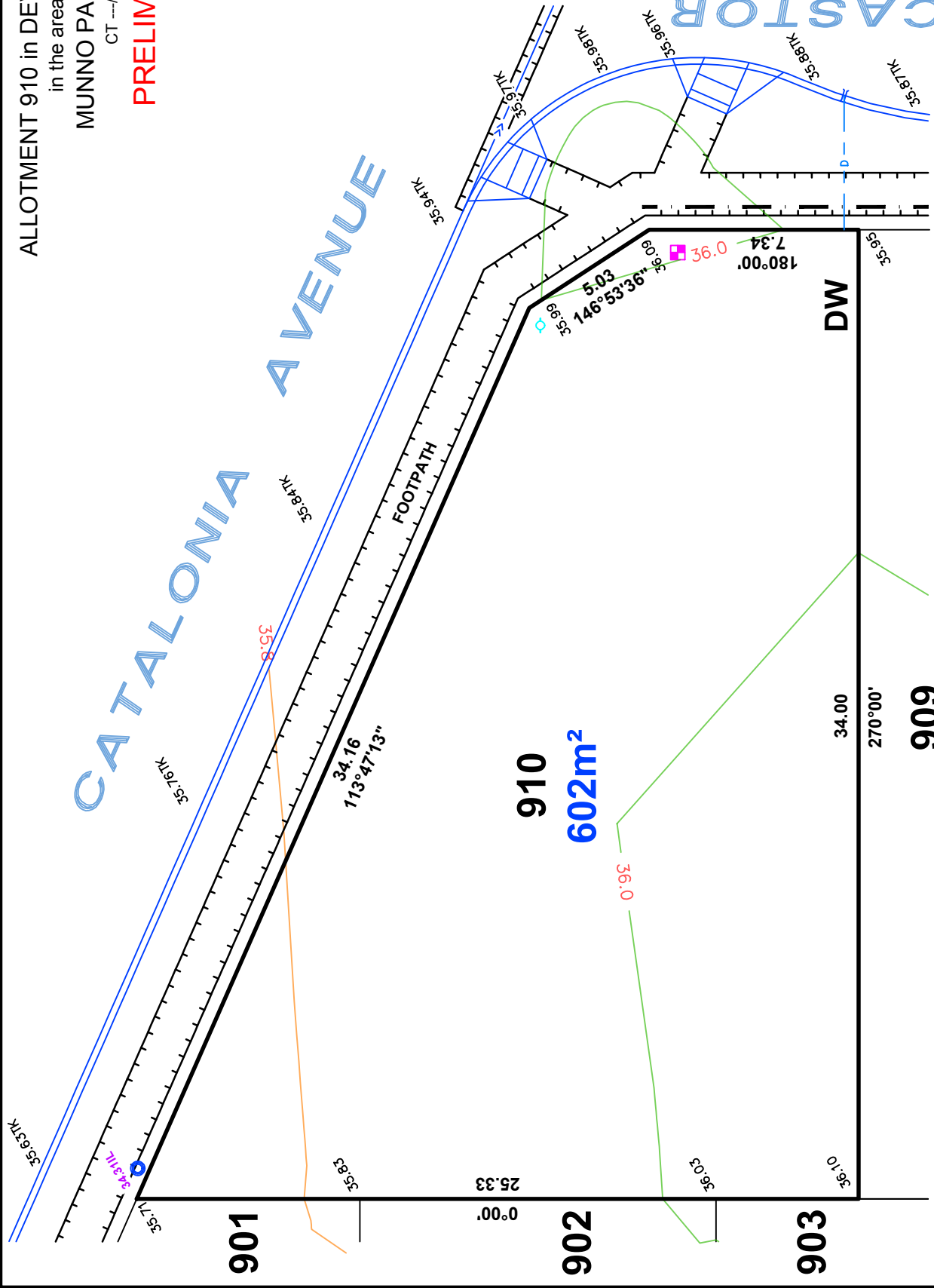


**IMPORTANT**  
 SERVICE AND DRIVEWAY LOCATIONS  
 ARE APPROXIMATE. ANY CHANGES WILL  
 BE AT THE PURCHASERS EXPENSE.  
 PURCHASER: \_\_\_\_\_  
 DATE: \_\_\_\_\_

ALLOTMENT 910 in DEV. NO.292/D066/2012  
 in the area named  
 MUNNO PARA WEST  
 CT ---/-----

**PRELIMINARY**

CATALONIA AVENUE



**LEGEND**

- WATER METER
- SIP
- SEWER IP
- STOBIE POLE
- TELSTRA PIT
- S/W GRATING
- SEWER MAN HOLE
- S/W MANHOLE
- LIGHT POLE
- E.T.S.A CONNECTION
- BOLLARD
- SIGN
- S/W CONNECTION
- FOOTPATH
- SIDE ENTRY PIT
- COMMON SERVICE TRENCH
- DOMESTIC
- SEWER IO
- DW PROPOSED DOUBLE DRIVEWAY

**IMPORTANT**  
 SERVICE AND DRIVEWAY LOCATIONS  
 ARE APPROXIMATE. ANY CHANGES WILL  
 BE AT THE PURCHASERS EXPENSE.  
 PURCHASER: \_\_\_\_\_  
 DATE: \_\_\_\_\_

